

**Spring 2021
Product Call
Highlights**

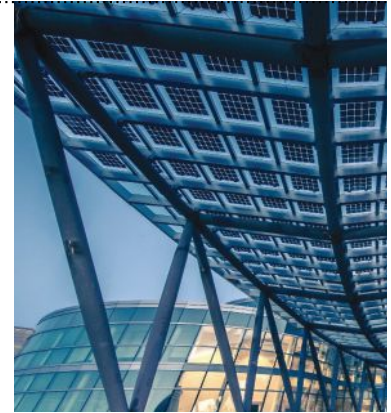
Gen3 Prime Wall System, BamCore

BamCore uses bamboo's inherent strength to engineer a customizable, code-compliant, dual-panel, studless wall-framing solution that can eliminate the need for OSB, furring, jack and king studs, and even drywall. The wall system consists of an inner and outer 4'-by-8' BamCore panel with a top and bottom wood plate; insulation can later be blown into the cavity. BamCore fabricates the panels—with custom knockouts for services and fenestration—and then numbers, palletizes, and delivers them to the job site. No heavy equipment is needed to erect the walls. bamcore.com



ESD-411-CP Faucet and Soap Combo, Sloan

With an angular and prominently positioned design, this sensor-activated faucet and soap combo from Sloan's Chicago-inspired Clark Street collection brings precise angles into harmony with subtle curves that capture light and attention. The modular one-piece assembly attaches to the deck surface while a motor assembly suspended under the counter connects to the soap-dispenser spout and has a battery life of up to 45,000 activations. Ships with two bottles of foam soap. sloan.com



Solarvolt BIPV Glass Modules, Vitro Architectural Glass

These building-integrated photovoltaic modules can be used in exterior glass surfaces on commercial buildings, including balustrades and balconies, skylights, spandrels, and canopies. The BIPV modules passively generate solar power and offer shading, which can also reduce cooling costs. The modules can be sandwiched between two glass lites or manufactured using glass-film techniques. Available in nearly any shape, in sizes up to 98" by 146", and in customizable configurations. vitorsolarvolt.com



Fluropon Continuum, Sherwin-Williams

Developed using decades of weathering research, this metalescent coating for coil and extrusion applications—including curtain wall frames, louvers, sunshades, and soffits—comprises a mica-based formulation that eliminates the need for a clear coat. Applied in-factory in two coats and available in 120 standard colors or custom colors. sherwin.com



Americana, Landscape Forms With Loll Designs

A reinterpretation of the classic Adirondack lounge chair, Americana offers a wide and tall profile to accommodate a range of seating positions and to help with ingress and egress. Constructed of ultraviolet-resistant, post-consumer recycled plastic, the outdoor chair requires little to no maintenance. Its polyester powder-coated aluminum supports and under-structure will resist fading and chipping, while its HDPE construction will not get too hot or cold for year-round comfort, according to the manufacturer. Americana comes in four vibrant colors and with an optional tablet arm and bag hanger. landscapeforms.com